

CABINET APPENDICES

Monday, 25th October, 2010
at 5.00 pm

APPENDICES ATTACHED TO THE LISTED REPORTS

Members

Councillor Smith, Leader of the Council
Councillor Moulton, Cabinet Member for Resources
and Workforce Planning
Councillor Baillie, Cabinet Member for Housing
Councillor Dean, Cabinet Member for Environment
and Transport
Councillor Hannides, Cabinet Member for Leisure,
Culture and Heritage
Councillor Holmes, Cabinet Member for Children's
Services and Learning
Councillor White, Cabinet Member for Adult Social
Care and Health
Councillor P Williams, Cabinet Member for Local
Services and Community Safety

Contacts

Cabinet Administrator
Judy Cordell
Tel: 023 8083 2766
Email: judy.cordell@southampton.gov.uk

Agendas and papers are now available via the Council's Website

9 APPROVAL OF THE NORTH SOLENT SHORELINE MANAGEMENT PLAN

10 HMS ARTFUL

11 QE2 MILE PROGRAMME RE-PRIORITISATION

Friday, 15 October 2010

SOLICITOR TO THE COUNCIL

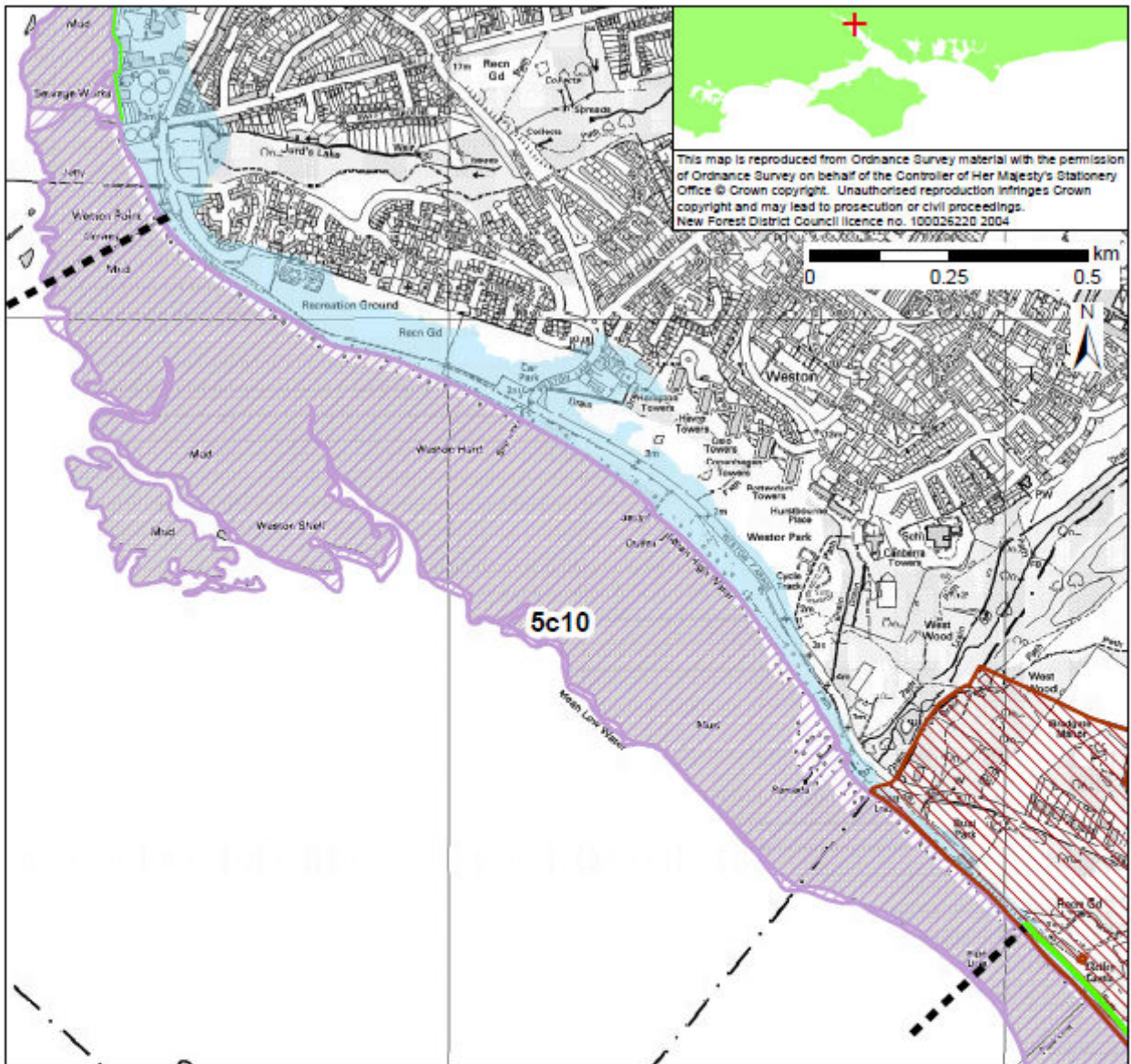
Policy Unit 5C10 Netley Castle to Weston Point		
Summary description of Policy Unit		
<p>The shoreline between Weston Point and Netley Abbey is undefended and managed by the Local Authority. The tidal floodplain is restricted due to topography, with residential and commercial properties located on the higher ground, but the flood risk area broadens towards Weston. The foreshore and open space are important recreational amenities; part of the open space is overlying a former landfill site. The sediment transport is from east to west, being fed by relatively low rates of erosion from the adjacent low cliffs. Netley Abbey and Netley Castle are key heritage monuments along with Conservation Area. Inter-tidal habitats of International, European and national nature conservation importance, and inland areas provide high tide roost sites and support the adjacent and nearby SPA/Ramsar sites. This frontage has been assessed in the draft River Itchen, Weston Shore, Netley and Hamble Coastal Defence Strategy, which has recommended a HTL policy for each epoch.</p>		
Final policy options		SMP1 Ref NET1 Hold the Line
Epoch 1 From Present Day (up to 2025)	Epoch 2 Medium Term (2025 to 2055)	Epoch 3 Long Term (2055 to 2105)
Hold the Line	Hold the Line	Hold the Line
Summary of rationale behind final policy options		
<p>The final policy options are taken from and consistent with the draft River Itchen, Weston Shore, Netley and Hamble Coastal Defence Strategy.</p> <p>The shoreline between Netley Abbey and Weston Point has no defence structures and historically has not needed beach management intervention from the local authority. The increasing coastal flood and erosion risks over the medium to long-term may however, necessitate beach management and replenishment activities to maintain the recreational beach and to prevent the erosion of the open space and underlying former landfill site. Such works would provide protection to the residential and commercial properties located within the tidal floodplain that extends over the open space to the southern fringe of the Woolston conurbation. Coastal monitoring will be key to the successful management of this beach.</p> <p>Due to the environmental designations within Southampton Water holding the defence line would contribute towards the loss of European and national nature conservation designated habitats such as inter-tidal foreshore habitats, through coastal squeeze. These losses will need to be mitigated within the same designated area or compensated for elsewhere and delivered through the Regional Habitat Creation Programme. Opportunities for habitat mitigation and compensation have been detailed within the Appropriate Assessment of the final policies.</p>		
Policy changes through Public Consultation		
<p>None. Public consultation on the draft River Itchen, Weston Shore, Netley and Hamble Coastal Defence Strategy will confirm the final policy and management approach, which may require revisions to the final SMP policies</p>		

Funding

It is uncertain whether central government funding would be secured for beach management for the frontage. Alternative sources of public funding may be available to Local Authority or to the County Council for adaptive management of the former landfill site.

Further Studies (identified in Action Plan)

Conclusion and approval of River Itchen, Weston Shore, Netley and Hamble Coastal Defence Strategy.



POLICY

From Present Day (up to 2025):	Medium-Term (2025 to 2055):	Long-Term (2055 to 2105):
Hold the Line	Hold the Line	Hold the Line

- Indicative erosion zone up to 2025
- Indicative erosion zone up to 2055
- Indicative erosion zone up to 2105
- Policy Unit Boundary
- International / National Designations
- Important Heritage Sites
- 2115 Indicative Floodplain (1 in 200 year) provided from PUSH

Policy Unit 5C11 Weston Point to Woodmill Lane

Summary description of Policy Unit

The areas of Southampton City on the east bank of the River Itchen has considerable development within the relatively restricted tidal floodplain, and comprises significant numbers of residential, industrial and commercial properties, including marinas, boat yards and wharfs, transport network and infrastructure, which are vital to the economy of the area and the region. The majority of the existing defences are privately owned and maintained. There are Scheduled Ancient Monuments, listed buildings, maritime features, registered Parks and Gardens and Conservation Area. Inter-tidal habitats of International, European and national nature conservation importance, and near shore structures provide high tide roost sites and support the adjacent and nearby SPA/Ramsar sites. The area is also designated a Local Nature Reserve. This frontage has been assessed in the draft River Itchen, Weston Shore, Netley and Hamble Coastal Defence Strategy, which has recommended a HTL policy for the first and second epochs and an NAI policy for epoch 3.

Final policy options

SMP1 Ref
ITCH 4 & 3 Hold the Line

**Epoch 1
From Present Day
(up to 2025)**

**Epoch 2
Medium Term
(2025 to 2055)**

**Epoch 3
Long Term
(2055 to 2105)**

Hold the Line

Hold the Line

No Active Intervention*
(further detailed studies required for management of site)

Summary of rationale behind final policy options

The final policy options are taken from and consistent with the draft River Itchen, Weston Shore, Netley and Hamble Coastal Defence Strategy.

The policy intention in the short and medium-term is to maintain the current line of defence to provide flood protection to the conurbations on the east bank of the River Itchen, with significant numbers of residential, commercial and industrial developments that are located within the relatively restricted tidal floodplain. Improvements and maintenance of the revetments and seawalls would be required to reduce the variation in the standard of protection provided by the largely privately owned defences. It is the policy intention that currently undefended sections will remain undefended.

In the long-term it may be uneconomical to continue to defend the entire frontage due to the increasing risk of coastal flooding. Property level defences or localised lengths of defences to protect properties or heritage sites may be more appropriate. The * in epoch 3 indicates that further assessments that address the economic, environmental and social implications of flood management issues for the frontage are required to determine adaptation and management options in the long term.

Due to the environmental designations within Southampton Water and the River Itchen, holding the defence line will continue to contribute towards the loss of European and national nature conservation designated habitats such as inter-tidal foreshore habitats, through coastal squeeze. These losses will need to be mitigated within the same designated area or compensated for elsewhere and delivered through the Regional Habitat Creation Programme. Opportunities for habitat mitigation and compensation have been detailed within the Appropriate Assessment of the final policies.

Policy changes through Public Consultation

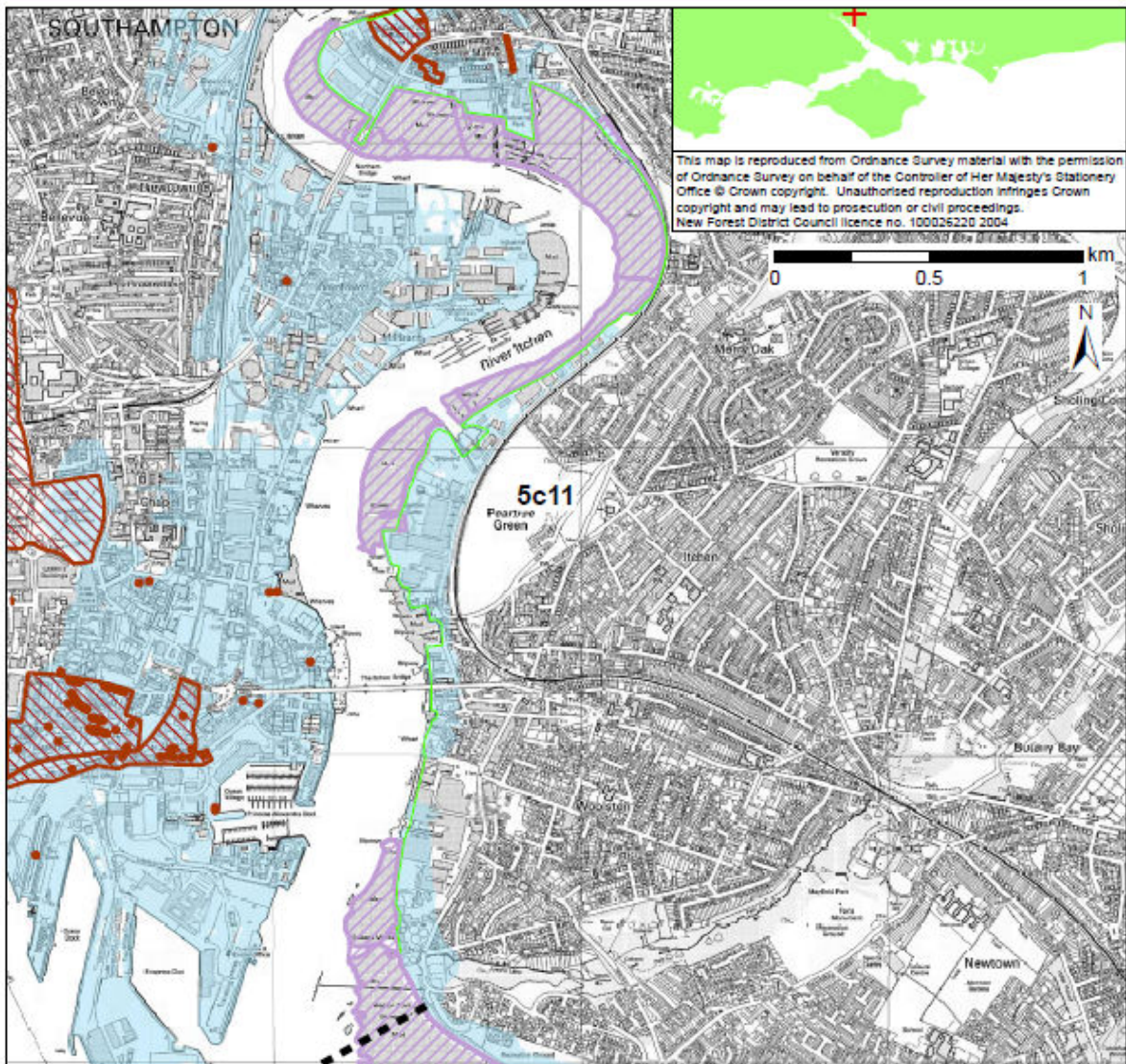
None. Public consultation on the draft River Itchen, Weston Shore, Netley and Hamble Coastal Defence Strategy will confirm the final policy and management approach, which may require revisions to the final SMP policies

Funding

It is likely that central government funding could be secured for majority of identified works. As is currently the case, however, no public funding would be available for continued maintenance of defences by private owners.

Further Studies (identified in Action Plan)

Conclusion and approval of River Itchen, Weston Shore, Netley and Hamble Coastal Defence Strategy.

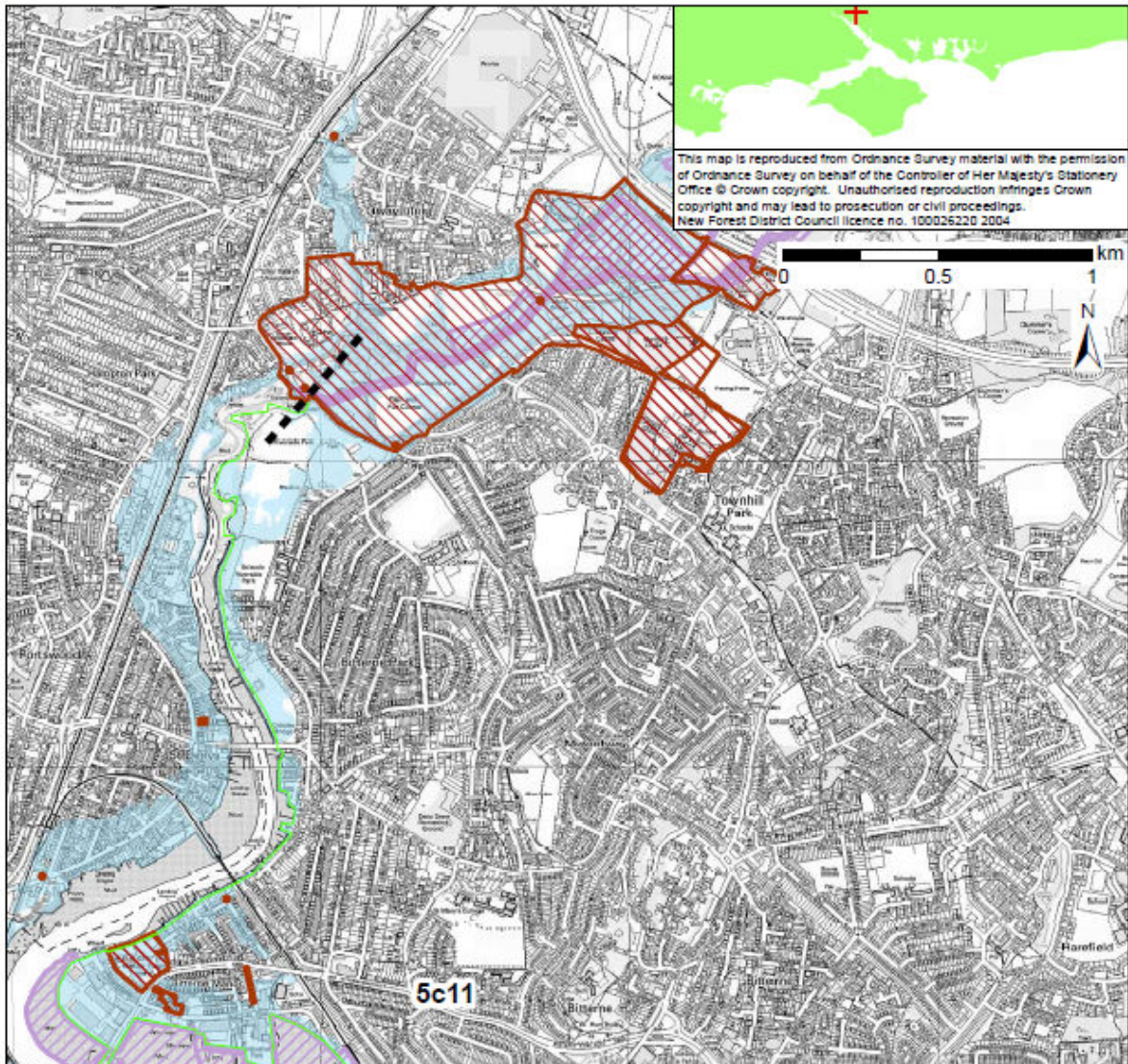


This map is reproduced from Ordnance Survey material with the permission of Ordnance Survey on behalf of the Controller of Her Majesty's Stationery Office © Crown copyright. Unauthorised reproduction infringes Crown copyright and may lead to prosecution or civil proceedings. New Forest District Council licence no. 100026220 2004

POLICY

From Present Day (up to 2025):	Medium-Term (2025 to 2055):	Long-Term (2055 to 2105):
Hold the Line	Hold the Line	No Active Intervention*
		*Requirement for more detailed study (for management of site that recognises coastal change and investigates property level defence options)

- Indicative erosion zone up to 2025
- Indicative erosion zone up to 2055
- Indicative erosion zone up to 2105
- Policy Unit Boundary
- International / National Designations
- Important Heritage Sites
- 2115 Indicative Floodplain (1 in 200 year) provided from PUSH



This map is reproduced from Ordnance Survey material with the permission of Ordnance Survey on behalf of the Controller of Her Majesty's Stationery Office © Crown copyright. Unauthorised reproduction infringes Crown copyright and may lead to prosecution or civil proceedings. New Forest District Council licence no. 100026220 2004

POLICY

From Present Day (up to 2025):	Medium-Term (2025 to 2055):	Long-Term (2055 to 2105):
Hold the Line	Hold the Line	No Active Intervention*
		*Requirement for more detailed study (for management of site that recognises coastal change and investigates property level defence options)

- Indicative erosion zone up to 2025
- Indicative erosion zone up to 2055
- Indicative erosion zone up to 2105
- Policy Unit Boundary
- International / National Designations
- Important Heritage Sites
- 2115 Indicative Floodplain (1 in 200 year) provided from PUSH

Policy Unit 5C12 Woodmill Lane to Redbridge

Summary description of Policy Unit

The City of Southampton extending from Woodmill at the head of the tidal River Itchen, to Redbridge has considerable development and comprises significant numbers of residential and commercial properties, including marinas, boat yards and wharfs, and associated infrastructure including sewage works. The Port of Southampton is owned by Associated British Ports (ABP) and is the UK's second largest container port and cruise passenger port (with over 1 million passengers in 2009) and has been identified as a key international gateway and critical component of the nation's transport system. ABP Southampton is the statutory harbour authority and owns significant parts of the water frontage within Southampton Water, including the current operational quay frontages for the port. The tidal floodplain is relatively extensive due to the topography affecting the port assets, waterside development, transport network, sewage works, and other associated infrastructure. Within the River Itchen the majority of the existing defences are privately owned and maintained, with sections maintained by the Local Authority. Between Ocean Village and Redbridge is the commercial and industrial Port of Southampton, and the quay walls and defences are maintained by the Port Authority. There are listed and historic buildings and monuments, maritime features, registered Parks and Gardens and Conservation Areas. Within the River Itchen there are limited inter-tidal habitats of International, European and national nature conservation importance, which support the adjacent and nearby SPA/Ramsar sites.

Final policy options

SMP1 Ref
ITCH2, 1 & TEST6 Hold the Line

Epoch 1 From Present Day (up to 2025)	Epoch 2 Medium Term (2025 to 2055)	Epoch 3 Long Term (2055 to 2105)
Hold the Line	Hold the Line	Hold the Line

Summary of rationale behind final policy options

The key policy drivers to maintain and improve flood defences are to continue to provide considerable economic and societal benefits to the heavily developed and populated conurbations of Southampton City within the extensive area of coastal flood risk. ABP, the City Council and EA are working jointly with regard flood risk and climate change; however ABP do not consider the quay walls, which they maintain, as coastal defences. These walls may provide a different standard of flood protection to protect Port interests compared to those proposed for residential areas. The commercial and industrial dominated frontage extending northwest from the River Itchen, is principally owned, and the defence structures maintained, by the port authority. The west bank of the River Itchen is wholly developed with substantial numbers of residential and commercial properties, heritage sites, transport networks and other associated city centre infrastructure.

National policy and the Regional Spatial Strategy recognise the Port of Southampton as a major international deep sea gateway port with significant global and economic importance. The reclaimed land known as Dibden Bay is the only area of land which is physically capable of accommodating significant expansion of the port. However, the land at Dibden Bay is a Site of Special Scientific Interest (SSSI) and adjoins the New

Forest National Park. The foreshore is of international importance, being designated as a Special Protection Area (SPA) and Ramsar site, as well as an SSSI. In 2004 the Secretary of State rejected previous proposals for port development at Dibden Bay principally because of its environmental impacts. Whilst there may be a strong economic case for the physical expansion of the Port of Southampton, any future expansion would, amongst other considerations, need to satisfy the requirements of the Habitats Regulations and adequate compensation would also be required.

Opportunities for habitat mitigation and compensation have been detailed within the Appropriate Assessment of the final policies.

Policy changes through Public Consultation

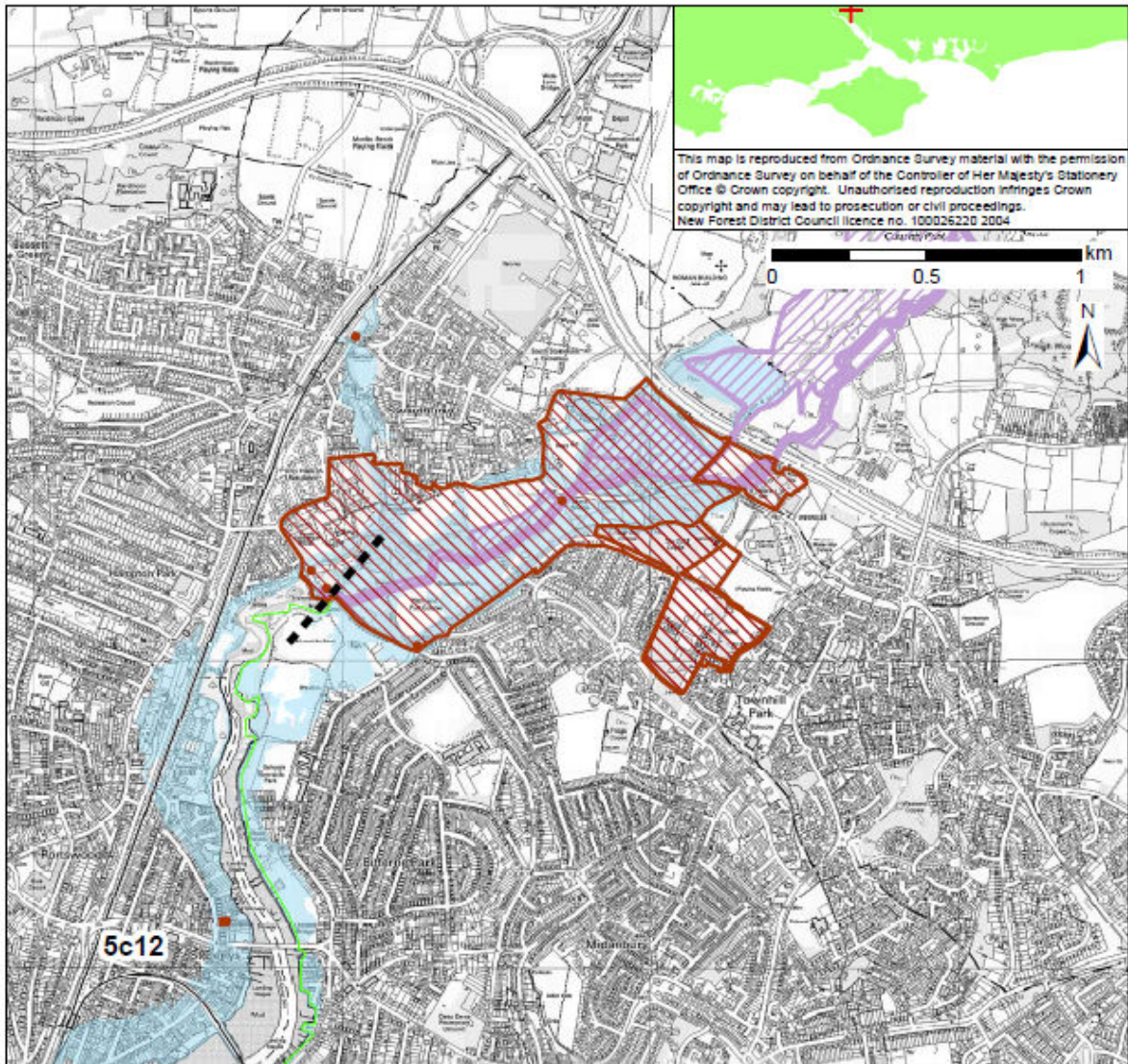
None.

Funding

It is likely that central government funding could be secured for majority of identified works. As is currently the case, however, no public funding would be available for continued maintenance of defences by private owners or for the privately-owned port and industrial frontage.

Further Studies (identified in Action Plan)

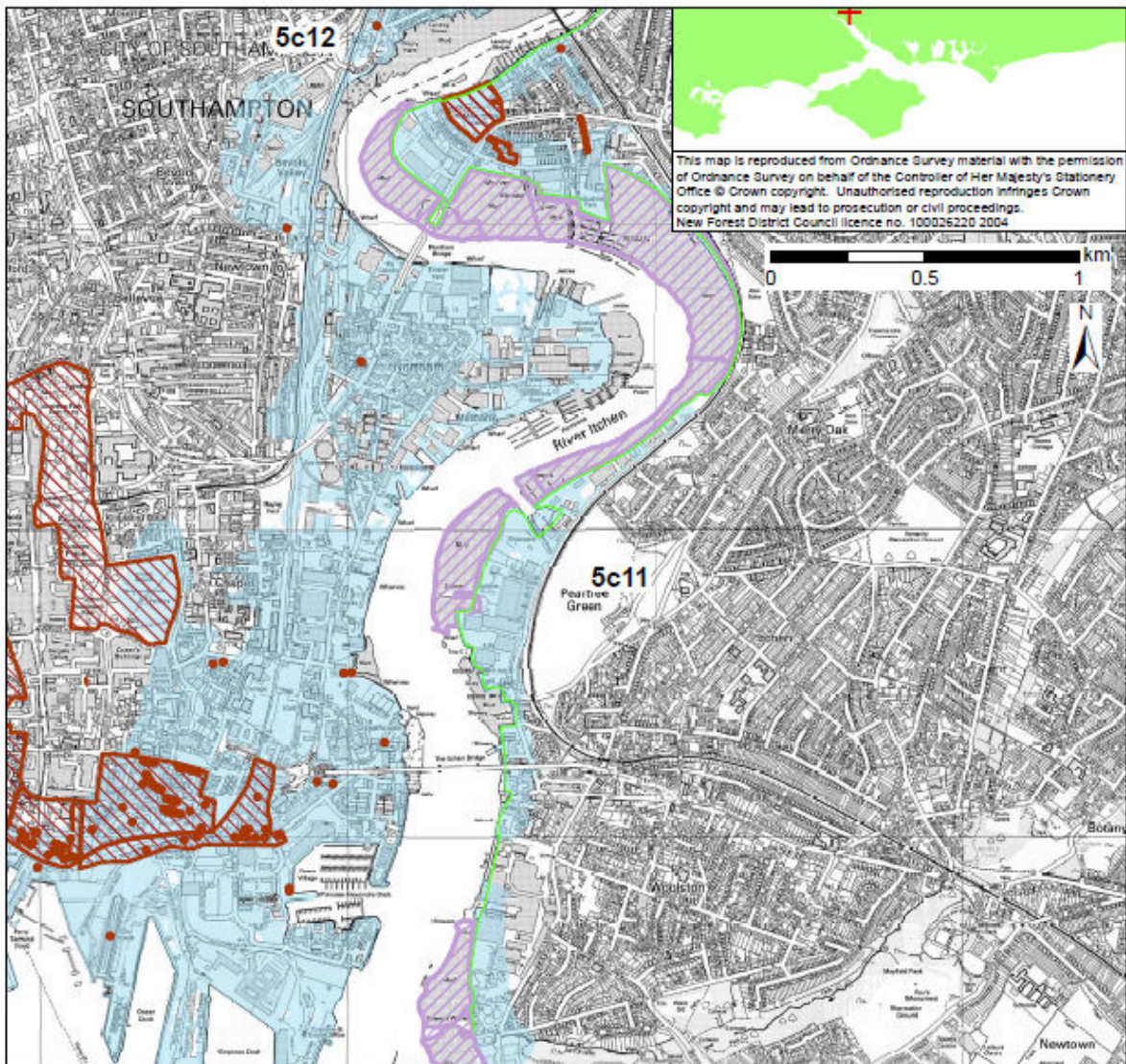
Southampton (Redbridge to Woodmill Lane) Flood and Coastal Erosion Risk Management Strategy



POLICY

From Present Day (up to 2025):	Medium-Term (2025 to 2055):	Long-Term (2055 to 2105):
Hold the Line	Hold the Line	Hold the Line

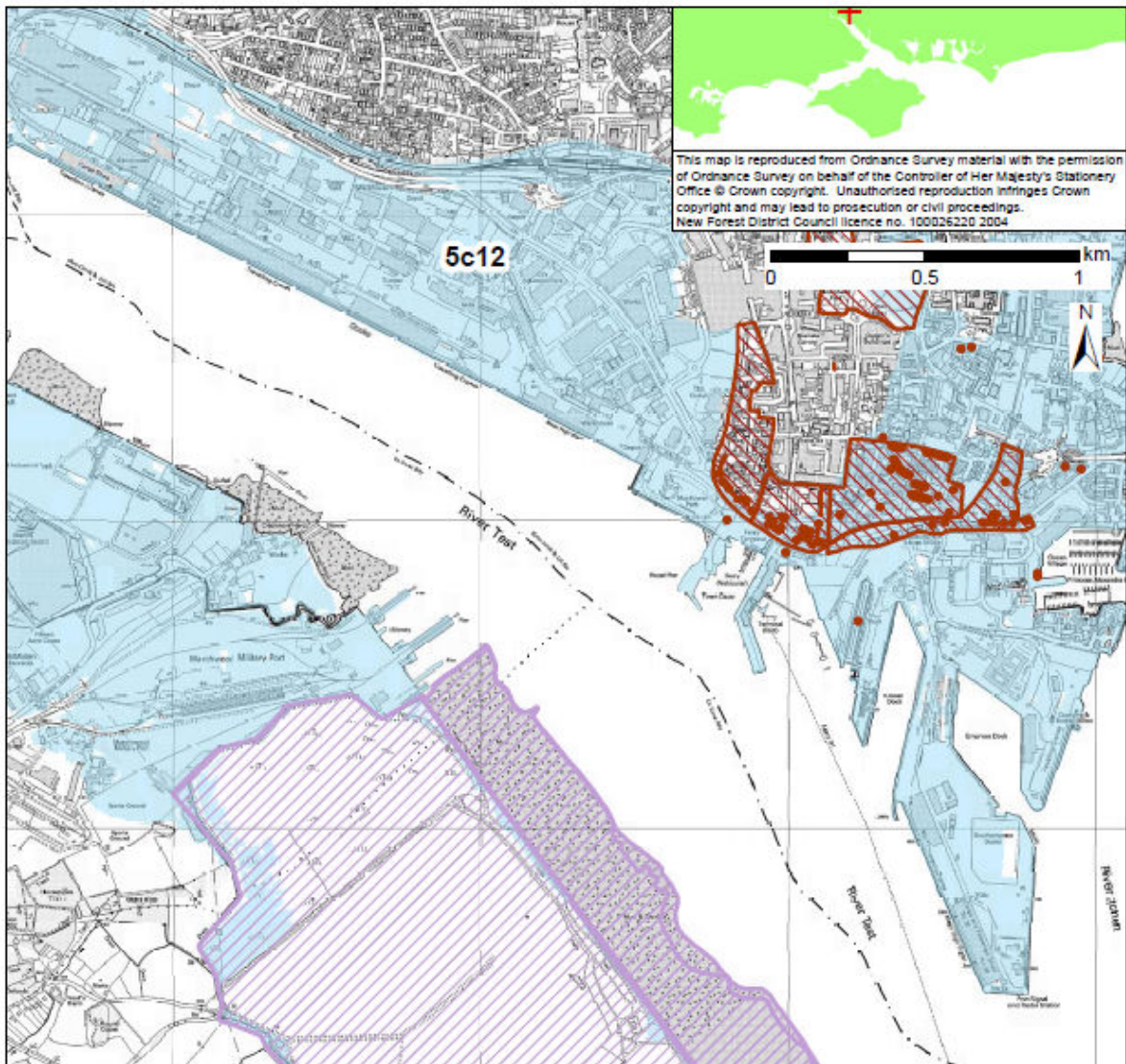
- Indicative erosion zone up to 2025
- Indicative erosion zone up to 2055
- Indicative erosion zone up to 2105
- Policy Unit Boundary
- International / National Designations
- Important Heritage Sites
- 2115 Indicative Floodplain (1 in 200 year) provided from PUSH



POLICY

From Present Day (up to 2025):	Medium-Term (2025 to 2055):	Long-Term (2055 to 2105):
Hold the Line	Hold the Line	Hold the Line

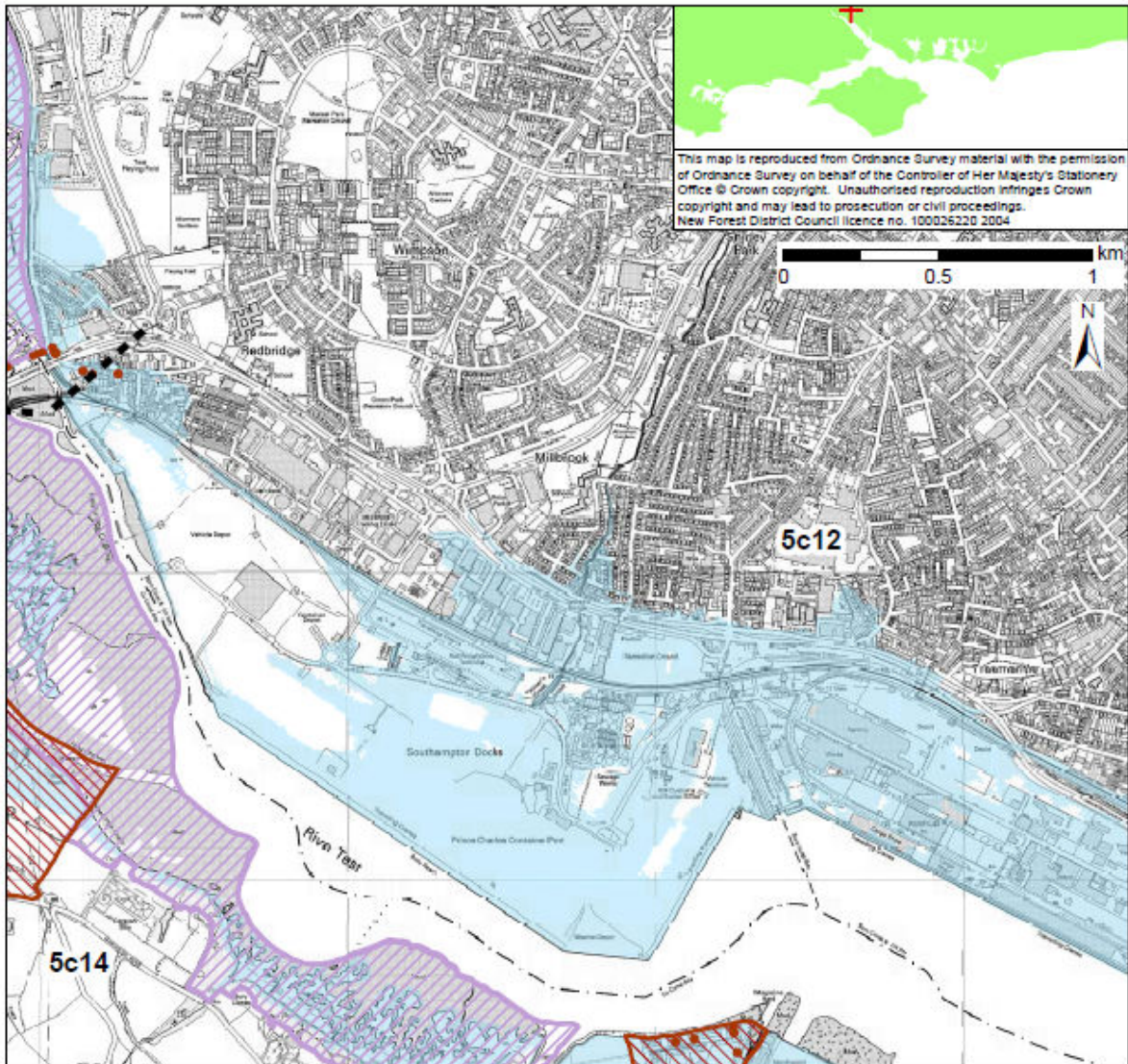
- Indicative erosion zone up to 2025
- Indicative erosion zone up to 2055
- Indicative erosion zone up to 2105
- Policy Unit Boundary
- International / National Designations
- Important Heritage Sites
- 2115 Indicative Floodplain (1 in 200 year) provided from PUSH



POLICY

From Present Day (up to 2025):	Medium-Term (2025 to 2055):	Long-Term (2055 to 2105):
Hold the Line	Hold the Line	Hold the Line

- Indicative erosion zone up to 2025
- Indicative erosion zone up to 2055
- Indicative erosion zone up to 2105
- Policy Unit Boundary
- International / National Designations
- Important Heritage Sites
- 2115 Indicative Floodplain (1 in 200 year) provided from PUSH



POLICY

From Present Day (up to 2025):	Medium-Term (2025 to 2055):	Long-Term (2055 to 2105):
Hold the Line	Hold the Line	Hold the Line

- Indicative erosion zone up to 2025
- Indicative erosion zone up to 2055
- Indicative erosion zone up to 2105
- Policy Unit Boundary
- International / National Designations
- Important Heritage Sites
- 2115 Indicative Floodplain (1 in 200 year) provided from PUSH

This page is intentionally left blank

Appendix 2

Action Ref	Action	Reason	Scheduling & Dependencies	Importance	Action Output	Lead Authority	Key Partners	Location/ Policy Unit	Target Start Date	Target End Date	Estimated Cost £	Confidence level (High/Medium/Low)	Actual Start Date	Actual End Date	Actual Cost £	MTP entry (yes/no/not applicable)	MTP ref on MTP sanction list	If no MTP entry then alternative funding source	Link to NI189 (e.g. LAs which have agreed with EA a contribution to this action)
1	Investigate mitigation measures, required for maintaining function of Solent-wide network of high tide roost sites.	Action Plan needs to ensure the most critical work continues to be funded at the right time. Reinforce the actions that are directed toward spatial and emergency planning professionals to ensure that communities fully recognise the risks from the sea (both now and in the future) and implement appropriate risk management measures. Implementation of emergency plans are particularly important if funding constraints potentially increase risk (flood, coastal and erosion) as a result of delayed schemes.	Urgent. Informing coastal management planning, Medium Term Plan, schemes and decisions (timings and inter-dependencies)	Very High	Revised Action Plan	Client Steering Group	All CSG members	Solent-wide	2010	2011	2011 EA and LA internal budgets	low	to be confirmed	to be confirmed	to be confirmed	n/a	n/a	n/a	
2	Investigate mitigation measures, required for maintaining function of Solent-wide network of high tide roost sites.	Provision of habitat and function mitigation measures. Monitoring of roost sites. Outcomes will need to be directly linked to FCERMS and the Regional Habitat Creation Programme.	Urgent. Informing coastal management planning, schemes and decisions	High	Reports, GIS & Partnership Working	Relevant LA to be advised by NE	Environment Agency, Local Authorities, Planning Authorities, Natural England & High Level Stewardship Team Regional Programme Team	Solent-wide	2011	2011	120,000	low	to be confirmed	to be confirmed	to be confirmed	Yes	to be confirmed	n/a	
3	From a flood risk management works perspective, undertake further studies to identify and understand the location, features and function of the Solent-wide network of high tide roost sites (as far as it is identified) and the likely consequences on the ability of roost sites to be damaged or lost (through managed or unmanaged alignment) linked to flood risk management works.	Confirm future management of sites where opportunities for managed realignment have been identified. Clarify and further promote options to landowners such as High Level Stewardship Scheme. There is also the need for monitoring of inter-tidal and coastal grazing marsh areas and high tide roost sites, to improve understanding of the sites in the network and to inform future management decisions. Ensure that the intertidal development trends are consistent with assumptions made in the SMP. The study and outcomes will need to be directly linked to FCERMS and outcomes informing the Regional Habitat Creation Programme.	Urgent. Informing coastal management planning, schemes and decisions	High	Reports, GIS & Partnership Working	to be confirmed (New Forest DC7), advised by NE	Environment Agency, Local Authorities, Natural England & High Level Stewardship Team Regional Programme Team	Specific locations within the Solent yet to be defined	2011	to be confirmed	120,000	low	to be confirmed	to be confirmed	to be confirmed	Yes	to be confirmed	n/a	
4	Completion of Ichen to Hamble Coastal Defence Strategy following public consultation. Determine policy and management approach for frontage.	Currently out to public consultation. Completion of CDS. Development of subsequent studies and schemes	Urgent. Informing coastal management planning, schemes and decisions	High	CDS	Southampton City Council	Eastleigh Borough Council, Fareham Borough Council, Environment Agency, Hampshire County Council	Ichen to Hamble (SC01 to SC11)	Dec-05	Apr-11	120,000	high	in progress	to be confirmed	to be confirmed	Yes	SOS005E/004A/16 AA	n/a	SCC have agreed with the EA an action to have the CDS submitted to NRG for approval by the end of this financial year (2010/2011).
5	Completion of Portsmouth to Ensworth Coastal Defence Strategy. Determine policy and management approach for frontage.	Completion of CDS. Specifically with regard to Farrington Marshes, determine the best way forward for delivering the assessment of the strategic importance of the freshwater habitat to the Solent Estuary; the recreational value of the site to Portsmouth City, local and national visitors; and flood storage issues as reported that specific schemes will be identified for Farrington Flood Control, Portsmouth to Paulsgrove Defences.	Urgent. Informing coastal management planning, schemes and decisions	High	CDS, Reports, GIS & Partnership Working	Environment Agency	Havant, Portsmouth & Gosport Coastal Partnership, Hampshire Wildlife Trust, Natural England	Portsmouth to Ensworth (SA16 to SA21)	Jun-05	Dec-10	to be confirmed	high	in progress	Jun-05	to be confirmed	Yes	SOS005E/005A/00 0A	n/a	
Actions																			
Monitoring Programme																			
6	Continuation of Strategic Regional Shoreline Monitoring Programme. National Programme commences in 2012 and will integrate regional programmes	Inform Planning Process (Coastal Change Management Areas), NCEM, FCERMS, Schemes, Post-project Appraisal and SMP reviews, etc.	Ongoing. Informing coastal management planning, schemes and decisions	High	Monitoring Programme	NFDC/CCO	Southern Coastal Group and others	Solent-wide	continuation (funding renewal 2012)	renewal every 5 years	947,000 (for 2011/12) for SE region, plus 1 of National Monitoring 35M for 5 years of which 12.3M for SE region)	high	continuation (funding renewal 2012)	to be confirmed	renewal every 5 years	Yes	SOS004C/00A/03 9A	n/a	
Flood and Coastal Erosion Risk Management Strategies																			
7	Development of a flood and coastal erosion risk management strategy study for Chichester Harbour, between East Head and Ensworth.	Comply with FCERMS guidance but include such items as more detailed economic, environment and social-economic assessments; identify and consider the tidal, fluvial, storm water and groundwater flooding issues; integrate provision/routing of coastal access in defence management; continue to build and improve relationships with landowners; identify sources of funding; clarify coastal planning issues; take account of the potential risks associated with withdrawal of privately owned defences and link with the RHCP accordingly. Apply the Gov's sea level rise allowances and guidance arising from UKCP09 or subsequent studies. It is expected that specific Schemes will be identified. Improvements and maintenance of all existing flood defences would cost an estimated £230M over the next 100 years, however, the vast majority of these defences are not maintained by private owners or MOD within this FCERMS study area.	To be informed by studies listed as urgent actions and other studies e.g. that investigate funding sources, identify and assess flood and erosion risk implications and clarify non-maintenance of defences.	High	CDS	Environment Agency	Chichester District Council, Chichester Harbour Conservancy, West Sussex County Council, Hampshire Wildlife Trust, Natural England, Landowners	Chichester Harbour between Ensworth and East Head	Jun-10	Aug-12	100,000	high	Jun-10	to be confirmed	£100K	Yes	SOS 005E/017A/000A	n/a	
8	Development of a flood and coastal erosion risk management strategy study for Hayling Island.	Comply with FCERMS guidance but include such items as more detailed economic, environment and social-economic assessments; identify and consider the tidal, fluvial, storm water and groundwater flooding issues; integrate provision/routing of coastal access in defence management; consider potential opportunities for Regulated Tidal exchange and sluice gate modifications at Stoke and West Northney; include the tidal delta morphology study to improve understanding of the implications of loss of the nearshore banks on Hayling Island shoreline; identify sources of funding; clarify coastal planning issues; address the potential risks associated with withdrawal of privately owned defences and link with the RHCP accordingly. Apply the Gov's sea level rise allowances and guidance arising from UKCP09 or subsequent studies. It is expected that specific Schemes will be identified such as Eastoke	To be informed by studies listed as urgent actions and other studies e.g. that investigate funding sources, identify and assess flood and erosion risk implications and clarify non-maintenance of defences.	High	CDS	Environment Agency	Havant, Portsmouth & Gosport Coastal Partnership, Chichester Harbour Conservancy, Hampshire County Council, Natural England, Landowners	Hayling Island Dec-10	Apr-12	350,000	high	2011?	to be confirmed	to be confirmed	£350K	Yes	to be confirmed	n/a	

Regional Studies	Commission region-wide wave climate risk assessment was undertaken in 2010-11. The assessment was undertaken in partnership with the Solent and Hamble River Head to Selsey Bill SMPs, etc.	Informing coastal management planning, schemes and decisions	High	Reports & GIS	New Forest DC	Southern Coastal Group	Region-wide	2011/12	2013/14	250,000	High	to be confirmed	to be confirmed	to be confirmed	Yes	to be confirmed	n/a
22	Informing coastal management planning, schemes and decisions	High	Reports & GIS	New Forest DC	Southern Coastal Group	Region-wide	2011/12	2013/14	250,000	High	to be confirmed	to be confirmed	to be confirmed	Yes	to be confirmed	n/a	
23	Commission region-wide wave climate risk assessment was undertaken in 2010-11. The assessment was undertaken in partnership with the Solent and Hamble River Head to Selsey Bill SMPs, etc.	Informing coastal management planning, schemes and decisions	High	Reports & GIS	New Forest DC	Southern Coastal Group	Region-wide	2012/13	2014/15	150,000	High	to be confirmed	to be confirmed	to be confirmed	Yes	to be confirmed	n/a
24	Informing coastal management planning, schemes and decisions	Medium	Reports, GIS & Partnership Working	New Forest DC	Southern Coastal Group	Region-wide	2014/15	2016/17	100,000	High	to be confirmed	to be confirmed	to be confirmed	Yes	to be confirmed	n/a	
25	Informing coastal management planning, schemes and decisions	Medium	Reports, GIS & Partnership Working	(New Forest DC?)	Southern Coastal Group	Region-wide	2015/16	2016/17	80,000	low	to be confirmed	to be confirmed	to be confirmed	Yes	to be confirmed	n/a	
26	Informing coastal management planning, schemes and decisions	Medium	Reports & GIS	Environment Agency	Local Authorities & River Hamble	2015/16	2016/17	60,000	low	to be confirmed	to be confirmed	to be confirmed	Yes	to be confirmed	?		
Contaminated Land / Landfill sites / Pollution Risk																	
27	Disseminate EA/CIRIA review of contaminated land sites and apply to the North Solent region.	Review may inform management of sites and line of defence content and scope of review of CIRIA report with regard to current and former landfill sites, there may be a need to explore funding sources for detailed investigations to determine potential contamination risks, groundwater saline intrusion risks and long-term management and reclamation of former and current landfill sites in flood and erosion risk zones).	Informing coastal management planning, schemes and decisions	High	Reports, GIS	Environment Agency for dissemination of CIRIA report	various locations within Solent area	to be confirmed	to be confirmed	40,000	low	to be confirmed	to be confirmed	to be confirmed	not if County Councils leading. Also not FOD/GA	?	n/a
Beach Management Plans																	
28	Investigate need for Beach Management Plans and beach recycling operations	ongoing	High	Beach Management	Southern Coastal Group to coordinate LA	Southern Coastal Group	various locations within Solent	ongoing	ongoing	90,000	low	to be confirmed	to be confirmed	to be confirmed	no	n/a	from each individual organisation's internal budgets
29	Produce the plans for Beach Management outcomes from Action 28	Dependent on Action X	High	Beach Management	the relevant Operating Authority	Southern Coastal Group	various locations within Solent	to be confirmed	to be confirmed	to be confirmed	low	to be confirmed	to be confirmed	to be confirmed	yes but in future years	n/a	n/a
30	Continue to implement current Beach Management Plans at sites such as Hurst Spit, Lee-on-the-Solent, Eastoke, and other sites as identified in Action 28	Dependent on Action X	High	Beach Management	the relevant Operating Authority	Southern Coastal Group	various locations within Solent area	ongoing	ongoing	various	low	to be confirmed	to be confirmed	to be confirmed	Yes (various Las included BMPs in MTP)	n/a	n/a
Regional Coastal Management																	
31	Prepare an Engagement Plan for ongoing consultations and discussions with landowners, MOD, general public	Informing FCERMS and schemes	High	Engagement Plan	Environment Agency	All CSG members	Solent wide	2011	ongoing updating	25,000	low	ongoing updating	to be confirmed	to be confirmed	No	n/a	Southern Coastal Group
32	Update the EA database of final SMP policies, and CSG member records and policy controls.	Ongoing, Informing coastal management planning, schemes and decisions	High	Reports & Partnership Working	Environment Agency	All CSG members	Solent wide	ongoing	ongoing updating	EA budget	low	ongoing	to be confirmed	to be confirmed	No	n/a	from each individual organisation's internal budgets
Advisory Actions																	
33	Report to the CSG and EMG as sub-groups of the Southern Coastal Group on the implementation of actions and update Action Plan and database. (NFCO to maintain SMP website)	Continued monitoring, data and information exchange, lessons learnt, etc	High	Reports & Partnership Working	Southern Coastal Group	All CSG members	Solent wide	ongoing	ongoing	n/a	n/a	ongoing	n/a	n/a	No	n/a	from each individual organisation's internal budgets
34	Include actions identified in Action Plan in the appropriate MTP submissions by CSG member authorities	Future funding and resource planning	High	Partnership Working	Southern Coastal Group	All CSG members to include relevant actions on their MTP-EA to audit phases	Solent wide	ongoing	ongoing	n/a	n/a	ongoing	n/a	n/a	No	n/a	from each individual organisation's internal budgets
35	Officers and Elected Members work with the Environment Agency to identify, secure and develop sites for habitat compensation and Habitat Creation Programme.	Scheme delivery, sustainable environmental and amenity benefits	High	Partnership Working	Southern Coastal Group	All CSG members	Solent wide	ongoing	ongoing	n/a	n/a	ongoing	n/a	n/a	No	n/a	from each individual organisation's internal budgets
36	Maintain a stakeholder engagement database and continue consultation with key stakeholders and general public. In the period up to SMP3.	see Action 23. Continue to raise awareness of coastal change, sea level rise and implications of climate change, current and predicted flood and erosion risk and issues and future management of defences with Elected Members the public and stakeholders. Inform them of progress of action plan.	High	Consultation	All CSG members to identify and maintain database of stakeholders. Southern Coastal Group to collate stakeholder databases	All CSG members	Solent wide	ongoing	ongoing	n/a	n/a	ongoing	n/a	n/a	No	n/a	from each individual organisation's internal budgets
37	Consultation with MOD regarding their landholdings and defences	see Action 23. Ongoing and future consultations with the MOD with regard to maintenance and management of their defences. Recommend development of exit strategy. If defences are either not to be maintained or /when there may be a change in ownership of site; and continue to explore opportunities for realignment of defences for environmental enhancement and compensation habitat measures.	High	Partnership Working	All CSG members	All CSG members	various locations within Solent area	ongoing	ongoing	n/a	n/a	ongoing	n/a	n/a	No	n/a	from each individual organisation's internal budgets

38	Consultations with third parties with regard to privately owned and maintained defences	see Action 23. Ongoing and future consultations with the landowners / associations / groups with regard to maintenance of privately owned and maintained defences. Database of landowner's intentions for future management of defences and take up of HLS / RHCP opportunities.	ongoing	High	Partnership Working	All CSG members	Solent-wide	ongoing	n/a	n/a	No	n/a	from each individual organisation's internal budgets
39	Consultations with development and planning colleagues e.g. defining Coastal Change Management Areas, inform national shoreline management policy and clarifying legal and planning coastal issues such as role, options, liabilities and/or obligations of the Coastal Protection Authority, Planning Authority and private defence owners	see Action 23. Encourage planning authorities, development and emergency response plans to refer to and take account of SMP policies, flood and erosion risk areas when identifying Coastal Change Management Areas, and consider preparations for extreme events that exceed design standards. Investigate with planners coastal planning issues e.g. potential liabilities if defences fail or no maintained, contributions to the Regional Habitat Creation Programme for additional habitat losses associated with improvement to or additional defences, etc.	ongoing	High	Consultation & Partnership Working	All CSG members / Planning Authorities	Solent-wide	ongoing	n/a	n/a	No	n/a	from each individual organisation's internal budgets
40	Integration of subsequent FCEMRS/other studies with Catchment Flood Management Plans	Identification and delivery of potential habitat creation/mitigation/outstream migration, clarification and improvements to tidal and fluvial flood risk mapping e. River Wallington	ongoing	High	Reports & GIS	All CSG members CDS Project team / Environment Agency & Local Authorities & Planning Authorities	Solent-wide	ongoing	n/a	n/a	No	n/a	from each individual organisation's internal budgets
41	Continue to update and improve flood risk maps and inundation modelling to provide improved flood warning service and contingency planning and ad definition of Coastal Change Management Areas. These measures will identify opportunities to support other approaches for protecting coastal communities	Inform Planning Process; FCEMRS, Schemes, consultation exercises and SMP reviews; define Coastal Change Management Areas.	ongoing	High	Mapping & Modelling	Environment Agency	Solent-wide	ongoing	n/a	n/a	No	n/a	from EA's internal budgets
42	Integrate National Coastal Erosion Risk Mapping is integrated with coastal and marine spatial planning, based on the latest available monitoring data and is readily available to coastal authorities, SMP reviews, CDS and other studies	Inform Planning Process (Coastal Change Management Areas) FCEMRS, Schemes, consultation exercises and SMP reviews	ongoing	High	GIS & Partnership Working	Environment Agency	Solent-wide	ongoing	n/a	n/a	No	n/a	n/a
43	Maintain a database of land and defences ownership details, defences type, condition and residual life, defence management intentions and reflect any changes arising from continued discussions with land and defence owners. Seek ownership and maintenance details for all defences when undertaking defence asset inspections in order to determine future work requirements and funding sources for maintenance and asset replacement. The database will include inspection and defence detail data included within EA's coastal asset database of defences.	Inform FCEMRS, Scheme delivery and SMP reviews, etc.	ongoing	High	GIS & Partnership Working	Environment Agency & Local Authorities & Planning Authorities	Solent-wide	ongoing	?	n/a	No	n/a	from each individual organisation's internal budgets
44	Disseminate Rapid Coastal Zone Assessment Survey (RCZSA) datasets for coastal and marine spatial planning and assessments and continue to develop sustainable management approaches for coastal communities	Inform Planning Process (Coastal Change Management Areas), FCEMRS, Scheme delivery, sustainable environmental and amenity benefits and SMP reviews, etc.	ongoing	Medium	Reports & GIS	New Forest National Park Authority & English Heritage	Solent-wide	ongoing	n/a	n/a	No	n/a	n/a
45	Continue and improve integration with tourism sector to develop sustainable management approaches for coastal communities	Inform FCEMRS, Schemes, consultation exercises and SMP reviews	ongoing	Medium	Reports & Partnership Working	All CSG members / Planning Authorities	Solent-wide	ongoing	n/a	n/a	No	n/a	from each individual organisation's internal budgets
46	Promote and encourage those at risk from flooding to sign up to Floodline TV earnings and Flood Bar	flood resilience and adaptive flood risk management	ongoing	Medium	Consultation & Education	Environment Agency & Local Authorities & Planning Authorities	Solent-wide	ongoing	n/a	n/a	No	n/a	from each individual organisation's internal budgets
47	Investigate accretion/erosion rates for intertidal habitat mapping and determining potential mitigation and compensation habitat creation when undertaking appropriate Assessments at FCEMRS and Scheme levels	Refine broad scale analysis in AA methodology which used a 3mm/yr accretion rate across Solent region (SDCP also developed 0mm and 6mm per yr scenarios). FCEMRS / Scheme to identify the appropriate SDCP scenario for assessment.	ongoing	Medium	Reports & GIS	Environment Agency & Local Authorities & Planning Authorities	Solent-wide	ongoing	n/a	n/a	No	n/a	from FCEMRS / Scheme budgets

Agenda Item 10

Admiral Sir Mark Stanhope GCB OBE ADC



Ministry of Defence
5th Floor, Section K
Main Building
Whitehall, London SW1A 2HB
Telephone: 020 7218 6193
Fax: 020 7218 4702

CNS/1/2/2

Mr B Roynon
Chief Executive
Southampton City Council
Civic Centre
Southampton
SO14 7LP



18 June 2010

Dear Mr Roynon,

AFFILIATION BETWEEN SOUTHAMPTON AND HMS ARTFUL

The Royal Navy values greatly the close interest and support afforded to affiliated ships and submarines, and I am cognisant that there has been a long and proud history between Southampton and a front line warship. It is in that regard that I write to you.

I attach great importance to civic relationships and propose for your consideration the formal affiliation of one of our ASTUTE Class submarines, HMS ARTFUL. This submarine is currently in the process of being built at Barrow-in-Furness. HMS ARTFUL is the third of her class and is due to commission in 2015, with an anticipated service life of approximately 25 years. This will therefore provide plenty of opportunity to establish a strong and enduring relationship with Southampton building upon the strong ties with the Royal Navy that already exist. This can be developed as she is being built and the first of her dedicated crew are expected to join her at the end of this year.

Should Southampton City Council choose to embrace this affiliation, I would very much like to make a formal announcement, either myself or an appropriate representative, at a suitable civic gathering or other formal occasion to mark not just the establishment of the new affiliation but the continued relationship with the Royal Navy. I would be grateful for your views in due course, please.

Should you wish further information I would be delighted to so provide, or alternatively my Naval Regional Commander, Commodore Tim Hennessey, is well placed to assist; I am aware that he is well known to you.

Yours sincerely,

Mark Stanhope

This page is intentionally left blank

QE2 Mile Reprioritised Future Programme

Project code	Cost Centre	Project Name	Current Year Budget 2010/11 as at August 2010	Future Years Budget	Total	Projects Withheld	Re-prioritised Funding 2010/11	Re-prioritised Funding beyond 2010/11	Updated Total
	C6200	Parent	£105,000		£105,000		£10,000	£935,000	£1,050,000
EDS18	C620E	High Street	£2,000		£2,000				£2,000
EDS21	C620F	Holy Road	£783,000		£783,000				£783,000
EDS14	C620H	The Precinct	£2,000		£2,000				£2,000
EDS12	C620M	New Road	£3,000	£572,000	£575,000	£-572,000			£3,000
EDS23	C620N	Briton Street	£5,000		£5,000				£5,000
EDS26	C620P	Lower High Street (South)	£1,000		£1,000				£1,000
EDS04	C620S	Above Bar Street (North)	£150,000		£150,000				£150,000
	C620W	Advanced Design	£6,000		£6,000				£6,000
	C620X	Installing QE2 Anchor	£8,000		£8,000		£72,000		£80,000
EDS05	C620L	Northguild		£290,000	£290,000	£-290,000			£0
EDS24	C620R	Queens Terrace (North)		£383,000	£383,000	£-383,000			£0
EDS19	C620T	St Michaels Square		£45,000	£45,000	£-45,000			£0
EDS20	C620V	St Michaels Street		£417,000	£417,000	£-417,000			£0
EDS17	C620Y	Bargate Square			£0		£40,000	£40,000	£80,000
Total QE2 Mile			£1,065,000	£1,707,000	£2,772,000	£-1,707,000	£122,000	£975,000	£2,162,000
		T&G Redevelopment			£0			£420,000	£420,000
	M9500	NAB Guildhall Square	£2,094,000	£0	£2,094,000		£190,000		£2,284,000
Total			£3,159,000	£1,707,000	£4,866,000	£-1,707,000	£312,000	£1,395,000	£4,866,000

This page is intentionally left blank